

▶ COPPER CONNECTIVITY

Copper Patch Panels



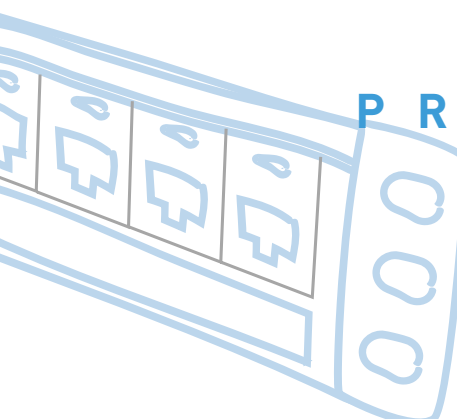
Legrand | Ortronics continues to lead the industry in patch panel design by fully supporting all of the internal and alien requirements of Category 6A/10 Gigabit Ethernet in a traditional multi-port adapter panel format. This accomplishment builds on the first ETL independently verified patch panel to meet the Category 6 component specification. Equally important, Ortronics® panels excel in performance while supporting ease of use and preferred installation practices. So, whether it is 10 Gig, PoE, Category 6 or voice, 110 termination or 50-pin, high density, standard density, angled or hinged, Legrand | Ortronics has a quality panel to serve your application.

▶ Clarity®
Patch Panels

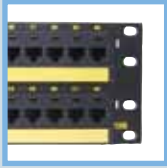
▶ Special
Application
Patch Panels

▶ Shielded
Patch Panels

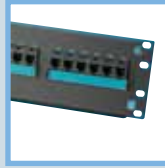
FEATURED PRODUCTS



Clarity
6A/10G
Patch Panels
P.46



P.46
Clarity 6A/10G
Flat Panels



P.47
Clarity 6 and
Clarity 5E Flat
Modular to 110
Patch Panels



P.47
Clarity 6 and
Clarity 5E Modu-
lar to 110 Mini
Patch Panels



P.48
Angled & Curved
Clarity6 and
Clarity5E
Modular to 110
Patch Panels



P.49
Clarity®
Maximum
Density Patch
Panels



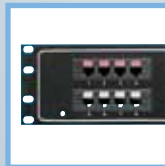
P.50
Clarity 6 and
Clarity 5E Panels
with Hinged Cable
Management



P.50
Clarity Rear
Loaded Jack
Panel Kits



P.52
Category 5e
and Category 6
RJ45 Feed-
Through Patch
Panels



P.52
Modular
Quadframe
19" Telco
Patch Panels



P.53
Category 6A
Shielded Patch
Panels



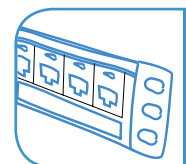
P.53
Category 5e
Shielded Modular
to 110 Patch
Panels



Clarity 6
& Clarity 5E
Maximum
Density
Patch Panels
P.49



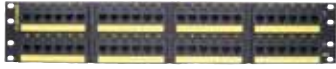
Clarity 6
& Clarity 5E
Curved
Patch Panels
P.48



CLARITY® PATCH PANELS

Clarity 6A/10G

OR-PHD6AU48



OR-PHA6AU24



Clarity 6A/10G Patch Panels

Clarity 6A/10G patch panels are available in the traditional multi-port panel format with 6-port modules and the added flexibility of flat or angled versions. Utilizing innovative methods for circuit isolation, the Clarity 10G multi-port patch panels support all alien and internal performance requirements of IEEE 802.3an (10GBase-T) and TIA Augmented Category 6 (6A) cabling specifications without requiring the use of individual jacks for your panel termination. Clarity 10G multi-port panels support traditional (linear 110) termination practices with mechanical accommodations for easy termination of the larger conductors of 10 Gig cables, providing a labor-saving alternative to the individual jack panel.

Clarity 10G angled patch panels utilize a unique recessed angle design to help direct cords with greater ease to vertical rack or cabinet management within a lower profile. This design provides an improved alternative for applications that don't offer rack space for horizontal management.

Features

- More transparent signal path with Clarity 10G cords
- Standard termination practice—110 tool
- IDC towers designed to accept larger 10 Gig cable conductors
- Easy-to-follow universal wiring label is quick and user-friendly to eliminate confusion
- High density panels include label fields and rear cable management
- Meets TIA 568C.2 Category 6A component specifications
- Backwards compatible to Category 6 and Category 5e

Clarity 6A/10G Flat Patch Panels

PART NO.	DESCRIPTION
OR-PHD6AU24	24-port flat Clarity 6A/10G patch panel, T568A/B, 1.75" x 19" (1RU)
OR-PHD6AU48	48-port flat Clarity 6A/10G patch panel, T568A/B, 3.5" x 19" (2RU)

Clarity 6A/10G Angled Patch Panels

PART NO.	DESCRIPTION
OR-PHA6AU24	24-port angled Clarity 6A/10G patch panel, T568A/B, 1.75" x 19" (1RU)
OR-PHA6AU48	48-port angled Clarity 6A/10G patch panel, T568A/B, 3.5" x 19" (2RU)

Clarity 6A/10G Curved Patch Panels

PART NO.	DESCRIPTION
OR-PHC6AU24	24-port curved Clarity 6A/10G patch panel, T568A/B, 1.75" x 19" (1RU)
OR-PHC6AU48	48-port curved Clarity 6A/10G patch panel, T568A/B, 3.5" x 19" (2RU)

CLARITY® PATCH PANELS

Clarity 6 and 5e

NOTE: All Ortronics product dimensions are listed by width, height and depth unless specified otherwise.

Clarity patch panels combine the Ortronics commitment to ease and reliability with the ETL verified TIA-568C.2 Category 6 or Category 5e performance of center tuned connector technology. These 110 termination 19" panels are available in six-port and eight-port module groupings, in 12, 24, 48, and 96-port sizes. Panels provide extensive designation abilities, icon compatibility and rear cable management.

- ETL verified to TIA component specifications to ensure component performance
- Center tuned to Clarity patch cords—more transparent mated union and higher channel performance
- Universal wiring supports T568A and B installations with linear 110 termination
- IDC housing handles both Category 6 and Category 5e conductors
- Supplied rear cable management supports cabling best practices
- High density design maximizes rack utilization



OR-PHD66U24



Clarity 6 and Clarity 5E Modular to 110 Patch Panels

OR-PSD66U24



OR-PHD68U24



Clarity High Density Patch Panels with Six-Port Modules

CLARITY 6 PART NO.	CLARITY 5E PART NO.	DESCRIPTION
OR-PHD66U24	OR-PHD5E6U24	24-port, T568A/B, height 1.75", 1 rack unit
OR-PHD66U48	OR-PHD5E6U48	48-port, T568A/B, 3.5" x 19" 2 rack units
OR-PHD66U96	OR-PHD5E6U96	96-port, T568A/B, height 7", 4 rack units

Clarity Standard Density Patch Panels with Six-Port Modules

CLARITY 6 PART NO.	CLARITY 5E PART NO.	DESCRIPTION
OR-PSD66U12	OR-PSD5E6U12	12-port, T568A/B, height 1.75", 1 rack unit
OR-PSD66U24	OR-PSD5E6U24	24-port, T568A/B, height 3.5", 2 rack units
OR-PSD66U48	OR-PSD5E6U48	48-port, T568A/B, height 5.25", 3 rack units
OR-PSD66U96	OR-PSD5E6U96	96-port, T568A/B, height 10.5", 6 rack units

Clarity High Density Patch Panels with Eight-Port Modules

CLARITY 6 PART NO.	CLARITY 5E PART NO.	DESCRIPTION
OR-PHD68U24	OR-PHD5E8U24	24-port, T568A/B, height 1.75", 1 rack unit
OR-PHD68U48	OR-PHD5E8U48	48-port, T568A/B, height 3.5", 2 rack units
OR-PHD68U96	OR-PHD5E8U96	96-port, T568A/B, height 7", 4 rack units

OR-PMP612H



OR-PMP61289



Clarity 6 and Clarity 5E Modular to 110 Mini Patch Panels

CLARITY 6 PART NO.	CLARITY 5E PART NO.	DESCRIPTION
OR-PMP612H	OR-PMP5E12H	12-port, T568A/B, hinged mounting
OR-PMP61289	OR-PMP5E1289	12-port, T568A/B, 89D mounting

CLARITY® PATCH PANELS

Angled and Curved

NOTE: All Ortronics product dimensions are listed by width, height and depth unless specified otherwise.


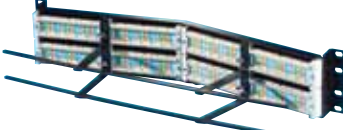
Clarity angled panels utilize a unique recessed angle design to help direct cords with greater ease to vertical rack or cabinet management within a lower profile. This design provides an improved alternative for applications that don't offer rack space for horizontal management. Rugged rear cable management is supplied to support best cabling practices.





Ortronics® Clarity curved patch panels offer yet another alternative for patch cord management. Built around the elevated performance of Clarity 6 and Clarity 5E, these high density patch panels feature a new look, utilizing a patented, recessed, curved design to help direct cords to vertical rack or cabinet management within a lower profile. This design provides another alternative for installations which have limited rack space for horizontal management.

- Lower mounted profile directs cords more easily to vertical management
- Deeper rear cable support bar addresses larger Category 6 cable designs
- ETL verified category performance
- Compatibility with standard 110 tool termination practices
- Time saving termination with easy lace multi-port adapters
- Rugged construction
- Label fields and icon compatibility
- Work especially well with the increased depth and enhancements of Mighty Mo® 6 and Mighty Mo 10 cable management racks

Angled Clarity 6 and Clarity 5E Modular to 110 Patch Panels

OR-PHA66U48	OR-PHA66U48 (back)	CLARITY 6 PART NO.	CLARITY 5E PART NO.	DESCRIPTION
		OR-PHA66U24	OR-PHA5E6U24	24-port, T568A/B, height 1.75", 1 rack unit
		OR-PHA66U48	OR-PHA5E6U48	48-port, T568A/B, height 3.5", 2 rack units

Clarity 6 and Clarity 5E Curved Patch Panels

OR-PHC66U24	OR-PHC5E6U24	CLARITY 6 PART NO.	CLARITY 5E PART NO.	DESCRIPTION
		OR-PHC66U24	OR-PHC5E6U24	24-port, T568A/B, 1.75" x 19", 1 rack unit
		OR-PHC66U48	OR-PHC5E6U48	48-port, T568A/B, 3.5" x 19", 2 rack units



CLARITY® PATCH PANELS

Maximum Density

NOTE: All Ortronics product dimensions are listed by width, height and depth unless specified otherwise.

OR-PMD5EU481U



Clarity 6 & Clarity 5E Maximum Density Patch Panels

Ortronics® maximum density patch panels offer 48 ports of Clarity 6 or 5E performance in 1 rack unit (1.75" x 19"). Panels are supplied with 24 rear-loading dual port termination (Clarity 6 or 5E) black modules.

PART NO.	DESCRIPTION
OR-PMD6U481U	1 rack unit, 19" x 1.75", maximum density, Clarity 6
OR-PMD5EU481U	1 rack unit, 19" x 1.75", maximum density, Clarity 5E

NOTE: Panels are also available unloaded. Dual port jacks are ordered separately. See below (Dual port jacks available in six colors.)

OR-PMDU481U



Clarity 48-port Maximum Density Unloaded Panels & Dual Jacks

Ortronics 48-port maximum density panel kit utilizes Clarity 6 and Clarity 5E dual panel jacks that can be terminated and snapped in from the back of the panel. A variety of panel configurations allow a wide choice of field configurable easy to install horizontal cross connects utilizing only 1 rack unit. The panel is supplied without the jacks.

PART NO.	DESCRIPTION
OR-PMDU481U	48-port, maximum density panel, 19" x 1.75", with rear wire management

OR-DJ600-36

OR-DJ5E00-36



PART NO.	DESCRIPTION
OR-DJ600-00	Panel jack, dual, Clarity 6, T568A/B, 8 pos, black, 180°
OR-DJ600-36	Panel jack, dual, Clarity 6, T568A/B, 8 pos, blue, 180°
OR-DJ600-42	Panel jack, dual, Clarity 6, T568A/B, 8 pos, red, 180°
OR-DJ600-43	Panel jack, dual, Clarity 6, T568A/B, 8 pos, orange, 180°
OR-DJ600-44	Panel jack, dual, Clarity 6, T568A/B, 8 pos, yellow, 180°
OR-DJ600-45	Panel jack, dual, Clarity 6, T568A/B, 8 pos, green, 180°
OR-DJ5E00-00	Panel jack, dual, Clarity 5E, T568A/B, 8 pos, black, 180°
OR-DJ5E00-36	Panel jack, dual, Clarity 5E, T568A/B, 8 pos, blue, 180°
OR-DJ5E00-42	Panel jack, dual, Clarity 5E, T568A/B, 8 pos, red, 180°
OR-DJ5E00-43	Panel jack, dual, Clarity 5E, T568A/B, 8 pos, orange, 180°
OR-DJ5E00-44	Panel jack, dual, Clarity 5E, T568A/B, 8 pos, yellow, 180°
OR-DJ5E00-45	Panel jack, dual, Clarity 5E, T568A/B, 8 pos, green, 180°

PATCH PANELS

Clarity® Patch Panel Kits

NOTE: All Ortronics product dimensions are listed by width, height and depth unless specified otherwise.

OR-PHAPJU48



OR-PJ600-00



Clarity Rear-Load Jack Panel Kits

Ortronics® rear-loading individual jack panels utilize reduced-size Clarity 6 and Clarity 5E panel jacks that can be terminated and snap-in from the back of the patch panel. A variety of panel configurations allow a wide choice of field configurable, easy to install horizontal cross connects. Panels are supplied without jacks. Jacks can be ordered individually or in full carton quantities of 24.

Rear-Load Panels (See panel jack part no. below panel no.)

PART NO.	DESCRIPTION
OR-PHAPJU24	24-port, panel jack panel kit, angled, unloaded, 1 rack unit, 19" x 1.75", HD
OR-PHAPJU48	48-port, panel jack panel kit, angled, unloaded, 2 rack units, 19" x 3.5", HD
OR-PHAPJU72	72-port, panel jack panel kit, angled, unloaded, 2 rack units, 19" x 3.5", HD
OR-PHDPJU24	24-port, panel jack panel kit, flat, unloaded, 1 rack unit, 19" x 1.75", HD
OR-PHDPJU48	48-port, panel jack panel kit, flat, unloaded, 2 rack units, 19" x 3.5", HD
OR-PHDPJU72	72-port, panel jack panel kit, flat, unloaded, 2 rack units, 19" x 3.5", HD

Rear-Load Panel Jacks

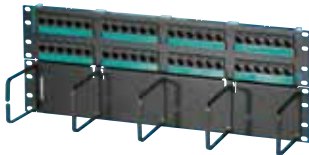
PART NO.	DESCRIPTION
OR-PJ6A-00	Panel jack, Clarity 6A, T568A/B, 8 pos, black, 180°
OR-PJ6-00	Panel jack, Clarity 6, T568A/B, 8 pos, black, 180°
OR-PJ5E-00	Panel jack, Clarity 5E, T568A/B, 8 pos, black, 180°

NOTE: Clarity panel jacks are available in these colors: -36 blue, -42 red, -43 orange, -44 yellow, -45 green. Replace tail code to the end of part number.

OR-PHD66U24HM



OR-PHD5E6U48HM



Clarity 6 and Clarity 5E Patch Panels with Hinged Cable Management

Hinged Clarity panels include cable management panels to assist in applications with limited rear access. Panels can be terminated in the hinged-down position while resting on management rings. Panels can also be mounted back-to-back on our 16.25" deep Mighty Mo racks.

Clarity High Density Hinged Panels with Six-Port Modules

CLARITY 6 PART NO.	CLARITY 5E PART NO.	DESCRIPTION
OR-PHD66U24HM	OR-PHD5E6U24HM	24-port, T568A/B, height 3.5", 2 rack units
OR-PHD66U48HM	OR-PHD5E6U48HM	48-port, T568A/B, height 7", 4 rack units

NOTE: 24-port high density panels have 1.75" cable management panels with 1.7" x 3.5" rings. All other hinged panels have 3.5" cable management panels with 3" x 4" rings.

Clarity Standard Density Hinged with Six-Port Modules

CLARITY 6 PART NO.	CLARITY 5E PART NO.	DESCRIPTION
OR-PSD66U24HM	OR-PSD5E6U24HM	24-port, T568A/B, height 7", 4 rack units
OR-PSD66U48HM	OR-PSD5E6U48HM	48-port, T568A/B, height 8.75", 5 rack units

NOTE: 24-port high density panels have 1.75" cable management panels with 1.7" x 3.5" rings. All other hinged panels have 3.5" cable management panels with 3" x 4" rings.

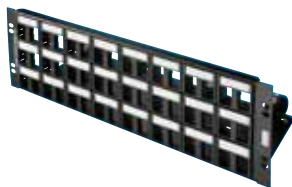


PATCH PANELS

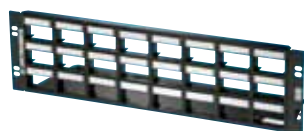
Patch Panel Kits

NOTE: All Ortronics product dimensions are listed by width, height and depth unless specified otherwise.

OR-401045292



OR-401045286



Patch Panel Kits

Ortronics® 19" wide panel kits provide the ability to field configure your own patch panels. Kits are available to support front-loading TracJack® or Series II® modules, providing panel options to support a wide range of applications. TracJacks and Series II modules are ordered separately.

Standard Density TracJack Patch Panel Kits

PART NO.	DESCRIPTION
OR-401045289	16 TracJack panel kit with shelf, height 1.75", depth 4", 1 rack unit
OR-401045290	24 TracJack panel kit with shelf, height 3.5", depth 5", 2 rack units
OR-401045291	32 TracJack panel kit with shelf, height 3.5", depth 5", 2 rack units
OR-401045292	48 TracJack panel kit with shelf, height 5.25", depth 6", 3 rack units

[TracJacks not included, see pg. 30]

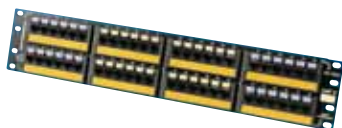
Standard Density Series II Patch Panel Kits

PART NO.	DESCRIPTION
OR-401045283	8, 1-unit Series II modules, panel kit with shelf, height 1.75", depth 4", 1 rack unit
OR-401045284	12, 1-unit Series II modules, panel kit with shelf, height 3.5", depth 5", 2 rack units
OR-401045285	16, 1-unit Series II modules, panel kit with shelf, height 3.5", depth 5", 2 rack units
OR-401045286	24, 1-unit Series II modules, panel kit with shelf, height 5.25", depth 6", 3 rack units

[Series II modules not included, see pg. 36]

SPECIAL APPLICATION PATCH PANELS

OR-PHD1002148



10/100 Base-T Fast Ethernet Patch Panels

Ortronics 10/100 Base-T panels provide a 50-pin connector interface between 25-pair cables and Fast Ethernet hubs. Twelve jacks are wired via a printed circuit board from each industry standard RJ21 50-pin female connector. Panels provide front and rear label fields. Use with 845E cable assemblies.

PART NO.	DESCRIPTION
OR-PHD1002124	24-port, 8-position 1, 2, 3, 6, height 1.75", 1 rack unit
OR-PHD1002148	48-port, 8-position 1, 2, 3, 6, height 3.5", 2 rack units

SPECIAL APPLICATION PATCH PANELS

NOTE: All Ortronics product dimensions are listed by width, height and depth unless specified otherwise.

OR-PHD5E2148



Category 5e Telco Panel

Ortronics® Category 5e 25-pair panels provide a 50-pin connector interface (standard RJ21 wiring) between Category 5e 25-pair cable Gigabit Ethernet hubs requiring full 4-pair cabling. Panels provide front label fields. Use with 845E cable assemblies.

PART NO.	DESCRIPTION
OR-PHD5E2124	24-port, flat panel, T568B, height 1.75", 1 rack unit
OR-PHD5E2148	48-port, flat panel, T568B, height 3.5", 2 rack units
OR-PHA5E2124	24-port, angled panel, T568B, height 1.75", 1 rack unit
OR-PHA5E2148	48-port, angled panel, T568B, height 3.5", 2 rack units

OR-PHD5EFF24



Category 5e and Category 6 Feed-Through Patch Panels

Ortronics Category 5e and Category 6 RJ45 feed-through panels provide interface between two RJ45 plugs.

PART NO.	DESCRIPTION
OR-PHD5EFF24	24-port, RJ45, feed-through patch panel, Cat 5e, T568A/B, 19"x 1.75", 1 rack unit
OR-PHD6FF24	24-port, RJ45, feed-through patch panel, Cat 6, T568A/B, 19"x 1.75", 1 rack unit

OR-PHD6FF24



OR-808004920



Modular Quadframe 19" Telco Patch Panels

Ortronics modular quadframe 19" telco panels provide RJ21 50-pin connectors wired to two-, four-, six-, or eight-contact jacks. These panels are commonly used to support voice, alarm, and low speed data applications. Available jack wiring: RJ11, RJ14, 8-position (4-5).



MALE TELCO PART NO.	FEMALE TELCO PART NO.	DESCRIPTION
OR-808004920	OR-808004921	24-port, 50-pin telco qty 1, 6-position RJ11, pins 3 and 4, height 3.5", 2 rack units
OR-808004940	OR-808004941	48-port, 50-pin telco qty 2, 6-position RJ11, pins 3 and 4, height 5.25", 3 rack units
OR-808004942	OR-808004943	48-port, 50-pin telco qty 4, 6-position RJ14, pins 2-5, height 3.5", 2 rack units
OR-808044253	OR-808004723	48-port, 50-pin telco qty 2, 8-position, pins 4 and 5, height 5.25", 3 rack units

OR-808004345



High Density Modular 19" Telco Patch Panels

Ortronics 19" wide high density modular telco panels provide RJ21 50-pin connectors wired to two-, four-, six-, or eight-contact 8-position jacks. These panels are commonly used to support voice, alarm, and low speed data applications.

MALE TELCO PART NO.	FEMALE TELCO PART NO.	DESCRIPTION
OR-808004388	OR-808004389	24-port, 50-pin telco qty 1, 8-position, pins 4 and 5, height 1.75", 1 rack unit
OR-808004333	OR-808004339	24-port, 50-pin telco qty 4, 8-position, pins 1-8*, height 1.75", 1 rack unit
OR-808004042	OR-808004041	48-port, 50-pin telco qty 2, 8-position, pins 4 and 5, height 3.5", 2 rack units
OR-808004343		48-port, 50-pin telco qty 8, 8-position, pins 3-6*, height 3.5", 2 rack units
	OR-808004351	48-port, 50-pin telco qty 8, 8-position, pins 1-8*, height 3.5", 2 rack units
OR-808004356	OR-808004373	96-port, 50-pin telco qty 4, 8-position, pins 4 and 5, height 7", 4 rack units

NOTE: *T568B wired 8-position jacks

SHIELDED PATCH PANELS

NOTE: All Ortronics product dimensions are listed by width, height and depth unless specified otherwise.

OR-PHDPJS6A24



Clarity® Shielded Jack Panels

Ortronics® shielded panels offer rear loading shielded jacks to support improved ease of termination and installation from the back of the panel.

PART NO.	DESCRIPTION
OR-PHDPJS6A24	24-port shielded, Category 6A, 1 rack unit, 19" x 1.75"
OR-PHDPJS5E24	24-port shielded, Category 5e, 1 rack unit, 19" x 1.75"

OR-PHATKS6A24



Category 6A Shielded Patch Panels with Rear Cable Management

PART NO.	DESCRIPTION
OR-PHDTKS6A24	24 port, Flat 1RU patch panel with 24 TKS6A jacks
OR-PHDTKS6A48	48 port, Flat 2RU patch panel with 48 TKS6A jacks
OR-PHATKS6A24	24 port, Angled 1RU patch panel with 24 TKS6A jacks
OR-PHATKS6A48	48 port, Angled 2RU patch panel with 48 TKS6A jacks

OR-PHDTKSU48



Unloaded Shielded Patch Panels

PART NO.	DESCRIPTION
OR-PHDTKSU24	Unloaded 24-port, flat 1RU patch panel for TKS jacks
OR-PHDTKSU48	Unloaded 48-port, flat 1RU patch panel for TKS jacks
OR-PHATKSU24	Unloaded 24-port, angled 1RU patch panel for TKS jacks
OR-PHATKSU48	Unloaded 48-port, angled 1RU patch panel for TKS jacks
OR-TKS6A	Category 6A Shielded self-terminating keystone jack

OR-867045187



Category 5e Shielded Modular to 110 Patch Panels

Shielded Category 5e modular to 110 patch panels are fully encased to protect connections from EMI and RFI and have a removable cover for easy access to terminations.

PART NO.	DESCRIPTION
OR-867045187	24-port shielded Category 5e patch panels, height 1.75", depth .95", 1 RU



CLARITY® POE PATCH PANEL

NOTE: All Ortronics product dimensions are listed by width, height and depth unless specified otherwise.

Perfect for VoIP, wireless access points, security cameras and more, Ortronics® Clarity PoE Patch Panel eliminates the need for a separate power supply and is the most cost effective way to deploy power where it is not easily accessible. It is available as a single unit or can be purchased in stages to delay the cost of the power until you're ready. And, the panel is designed to allow easy access to cable terminations even when active.

- Compliant with IEEE 802.3af power specifications
- LED indicators on front of panel easily identify the real time powering status of each port
- Serial port provides installer detailed information and control of each port
- Order as a single unit that includes 16-port panel, PoE controller and power supply or as separate components for a staged deployment
- Clarity PoE panels only occupy 1 rack space
- 260 watt power supply supports IEEE 802.3af maximum of 15.4 watts per channel measured at the IDC
- Utilizes standard 110 termination
- Meets TIA/EIA-568-B.2 Category 5e component specifications
- Center tuned Clarity technology for elevated performance
- More transparent signal path when used with Clarity cords
- Supplied label fields and icon compatible

Clarity® PoE Patch Panel

OR-PP5ECMS16



PART NO.	DESCRIPTION	
OR-PP5ECMS16	Clarity 5E 16-port PoE powered panel, 260 watt, 1.75"x 19" x 10.5", 1 rack unit, T568A/B	↓
OR-PP5EUPF16	Clarity 5E 16-port PoE panel, without power or controller, 1.75" x 19", 1 rack unit, T568A/B	
OR-PPS2601U	Power supply, 260 watt, with output cable, for use with OR-PP5EUPF16	
OR-CMS161U	Control module for 16-port PoE, for use with OR-PP5EUPF16	

LABELING AND DESIGNATION SOLUTIONS

NOTE: All Ortronics product dimensions are listed by width, height and depth unless specified otherwise.

OR-70400408



Six- and Eight-Port Module Patch Panel Designation

Color-coded designation strips can be used in six or eight-port patch panel module front bezels. Designation strip sheets are 8.5" W x 11" H. Support by the Label XL templates.

LabelMo XL Labeling Templates

The LabelMo XL templates provide a new format for your labeling needs that increases flexibility and ease of use.

- Provided in an easy-to-use Excel format.
- Uses our standard 8.5" x 11" label stock.

Six-Port Module Patch Panel Designation

PART NO.	DESCRIPTION
OR-70400408	White
OR-70400408-22	Red
OR-70400408-23	Orange
OR-70400408-24	Yellow
OR-70400408-25	Green
OR-70400408-26	Blue

NOTE: Ten sheets per package, 48 labels per sheet.

Eight-Port Module Patch Panel Designation

PART NO.	DESCRIPTION
OR-70400409	White
OR-70400409-22	Red
OR-70400409-24	Yellow
OR-70400409-26	Blue

NOTE: Ten sheets per package, 24 labels per sheet.

Eight-Port Module Thin Patch Panel Kit Designation

PART NO.	DESCRIPTION
OR-70400644	White

NOTE: Ten sheets per package, 44 labels per sheet.

Six-Port Module Thin Patch Panel & Jak-Pak Designation

PART NO.	DESCRIPTION
OR-70400691	White

NOTE: Ten sheets per package, 88 labels per sheet.

Six-Port Module Thin Designation Holder

PART NO.	DESCRIPTION
OR-70400692	Bezel color for maximum density patch panels

NOTE: Eight required per patch panel.

Replacement Designation Strip Covers

PART NO.	DESCRIPTION
OR-70400141	Six-port module, package of four, yellow, Clarity 10G
OR-70400638	Six-port module, package of four, blue, Clarity 6
OR-70400659	Six-port module, package of four, green, Clarity 5E
OR-70400789	Eight-port module, package of four, blue, Clarity 6
OR-70400790	Eight-port module, package of four, green, Clarity 5E

Color-Coded Icons



Color-Coded Icons

Ortronics color-coded designation tabs are for port identification on patch panels and most workstation products. The tabs are available in 606 standard colors with a voice or data icon or blank. Package of 100.

OR-403	XX	X	00
Manufacturer Number	Coloring	Marking	
	00=Black	1=Voice	
	22=Red 25=Green,	23=Orange, 2=Data	
	24=Yellow 27=Purple,	5=Blank	
	26=Blue 09=Fog White,		
	13=Electrical Ivory		

Ordering example: To order a red voice tab, use the following part number OR-40322100

NOTE: For a complete set of voice and data tabs in all colors, use order number OR-40300174.